

A LETTER FROM OUR
Executive Director

On behalf of the Autism Tree Project Foundation family including our staff, Board of Directors, and over 400 volunteers at Autism Tree, we extend our sincere gratitude to YOU! With your support, we have successfully continued to provide our core mission of CARE: Community, Awareness, Research & Education to thousands of children and families impacted by autism.

Over the past 15 years, Autism Tree has invested more than \$2.6 million in the San Diego and Bay Area communities through our more than 20 free programs and numerous services. In this time, we have established ourselves as the leading resource serving families with autism. This last year, we expanded the ATPF staff by hiring a full-time Operations Manager to meet the increased needs of our growing community of individuals on the autism spectrum and their families.

We successfully expanded our ATPF Early Intervention Preschool Screening Program in 2018, which moves us closer to our annual goal of screening all 10,300 Head Start Preschoolers in San Diego County. We have done this by adding 7 new Head Start Neighborhood House Association Centers to our list of screening sites and launching a new partnership with MAAC Head Start in North County San Diego to screen their preschool students and early childhood center participants.

In October, we hosted our Annual Neuroscience Conference (our most successful one yet!) at the Sanford Consortium for Regenerative Medicine in La Jolla, California. The 4th Annual Autism Tree Neuroscience Conference had a 30% increase in attendance by attracting more than 450 attendees from across the globe. This included 12 distinguished presenters from leading institutions, which included: University of California San Diego, Stanford University, Rady Children's Hospital San Diego, San Jose State University, Takeda San Diego, and California Institute of Technology. Our success and global impact has grown thanks to our Conference Chairman Alysson Muotri, Ph.D. from the Sanford Consortium, and our Conference Moderator Roger Bingham from the SALK Institute. This conference is integral to continue to accomplish our mission of uniting the research community to our families.

Over the past year, we gained more supporters and community investors to expand Autism Tree's research, early intervention preschool screenings and programs. In April, we hosted our 2nd Annual 1,000-person Breakfast at Tiffany's Luncheon, raising \$268,245 to support our vision of kindergarten readiness for children. In November, we hosted our 5th Annual Giving Tuesday Telethon & Year-End Campaign, raising \$128,996 from 357 donors, and we tripled the average #GivingTuesday year-end donation to \$120.

In 2018, we charted a proactive course forward to establish OnePlace, a revolutionary concept that will change the way we research, screen and serve the autism community. Autism Tree's OnePlace team was formalized by recruiting community leader Rich Horner, who has engaged donors and community partners to invest in OnePlace, a world-class center that will support thousands of children and families affected by neurodiversity. OnePlace will leverage cutting-edge technology and apply multidisciplinary treatment processes through the collaboration of local researchers, physicians and children.

Where we come from, what we have accomplished, and where we are going are all thanks to YOU. With your continued support, we can create brighter futures for our children and families.

With Gratitude,

Dayna K. Hoff, MBA
Volunteer Executive Director, Co-Founder & Board Member



BOARD OF DIRECTORS

Todd Hoff - Chairman of the Board & Co-Founder
COO Crozer-Keystone Health System

Dayna Kay Hoff
ATPF Volunteer Executive Director & Co-Founder

Shane Brennan
Co-Owner Holsem Coffee, Enlightened Hospitality Group

Eric Cusick
Self Performed Work Executive, DPR Construction

Pablo A. Fernandez
CEO & Founder, Secret Table

Curtis Gabhart
President, Gabhart Investments, Inc.

Christen Kugener
Owner, Le Caramel & The Basket Corner

Tony Mauriello
Vice President, Business and Legal Affairs, General Counsel at DrChrono

Laura Bonafede Odum
Partner, CSR Real Estate Services

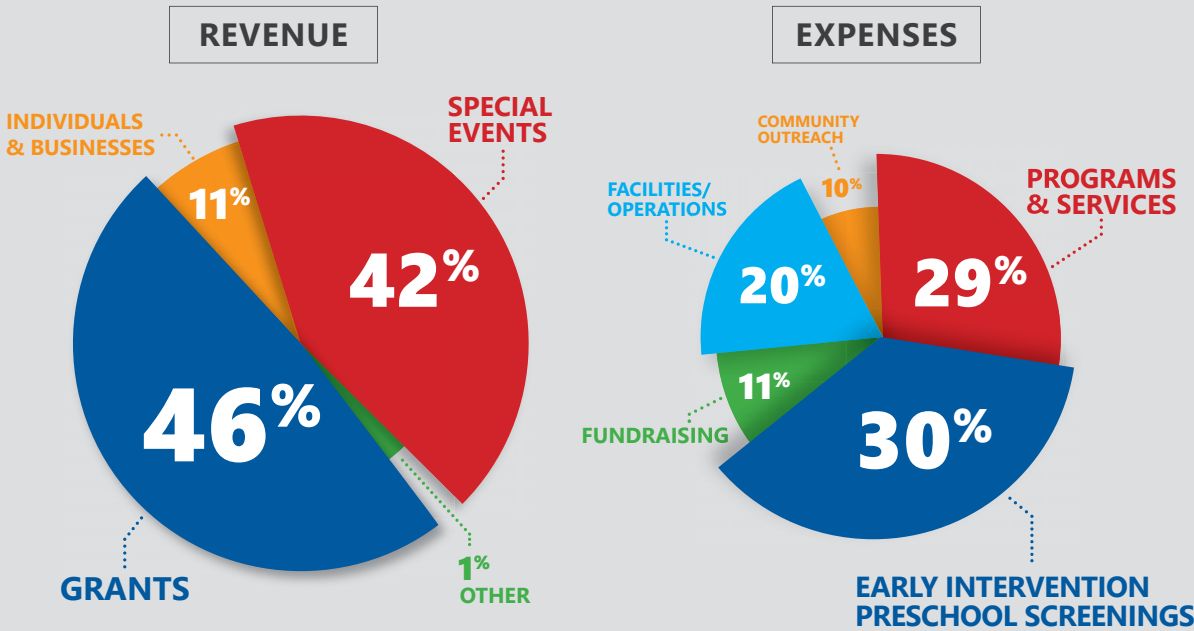
Phil Senescall
Director of Sales & CFO at Professional Maintenance Systems

Alexandra Taccone
Agent, Courtesy Real Estate

Linda Rosas Townson
Senior Vice President, CommunityMedia Corporation

AUTISM TREE PROJECT FOUNDATION

2018 Financials



THANK YOU TO OUR GENEROUS GRANT SUPPORTERS

Arthur and Jeanette Pratt Memorial Fund
Bodean Family Fund at the Sonoma County Community Foundation
Charlie Rae Fund at the Marin Community Foundation
COX Charities
CSR Cares
Cushman Foundation
David C. Copley Foundation
David E. and Deborah A. Johnson Family Trust
Donald C. and Elizabeth M. Dickinson Foundation
DPR Construction
Epstein Family Foundation
First 5 San Diego
George and Betty Harbaugh Charitable Foundation
Kaiser Permanente
Kajima Foundation
Lift Up Autism 2.0
Maurice Masserini Charitable Trust

Melisa Reasner McGuire Advised Endowment Fund
Movement Foundation
National Foundation for Autism Research
Nordson Corporation Foundation
Paula and Oliver B. Jones Family Foundation
Prevent Drowning Foundation of San Diego
Price Philanthropies
County of San Diego Community Enhancement Program
Samuel I. and John Henry Fox Foundation
Samuel and Katherine French Fund
Sempra Energy
Solar Turbines
The Gold Diggers
Thursday Club Foundation
University of San Diego Giving for The Greater Good
Walter J. and Betty C. Zable Foundation
WD-40 Foundation

Every family tree is touched by autism. If you don't know someone with autism, you will. Autism affects 1 in 50 school-aged children, ages 6-17.*

*Center for Disease Control & Prevention, 2013



AUTISM
tree project
FOUNDATION

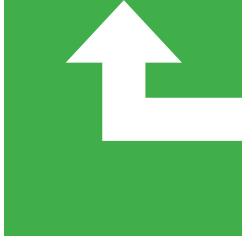
For more information about the Autism Tree Project Foundation
www.autismtreeproject.org | Autism Tree Office Phone: (619) 222-4465

Lisa Kaufmann, Director of Development
Lisa@autismtreeproject.org

This annual report was generously sponsored by



AUTISM
tree project
FOUNDATION



DONATE
to ATPF

Fund
RESEARCH
to support
affected
families

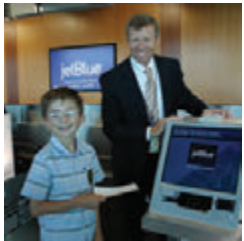


Implement
SCREENINGS
at preschools in
underdeveloped
areas

Provide more
than 20
FREE
PROGRAMS
throughout the
community



creating
BRIGHTER futures
for children
with **AUTISM**



ANNUAL REPORT
2018



Early Intervention

Autism Tree is the only organization in San Diego County and the Bay Area offering Early Intervention Preschool Screenings at both private and Head Start preschools at no cost to the parent or school.

2.7
MILLION
CHILDREN
IMPACTED

2,100 college students have been trained through the ATPF San Jose State University Speech & Language Student Training Program

\$36
TO SCREEN A CHILD

21%

of children screened in 2018 were referred on for further evaluation

17,000

screenings provided and **more than 700** teachers and staff trained since 2006

2,000

preschool children screened per year

Early intervention preschool screenings provided at **100 preschool sites** (and counting!)



RESEARCH

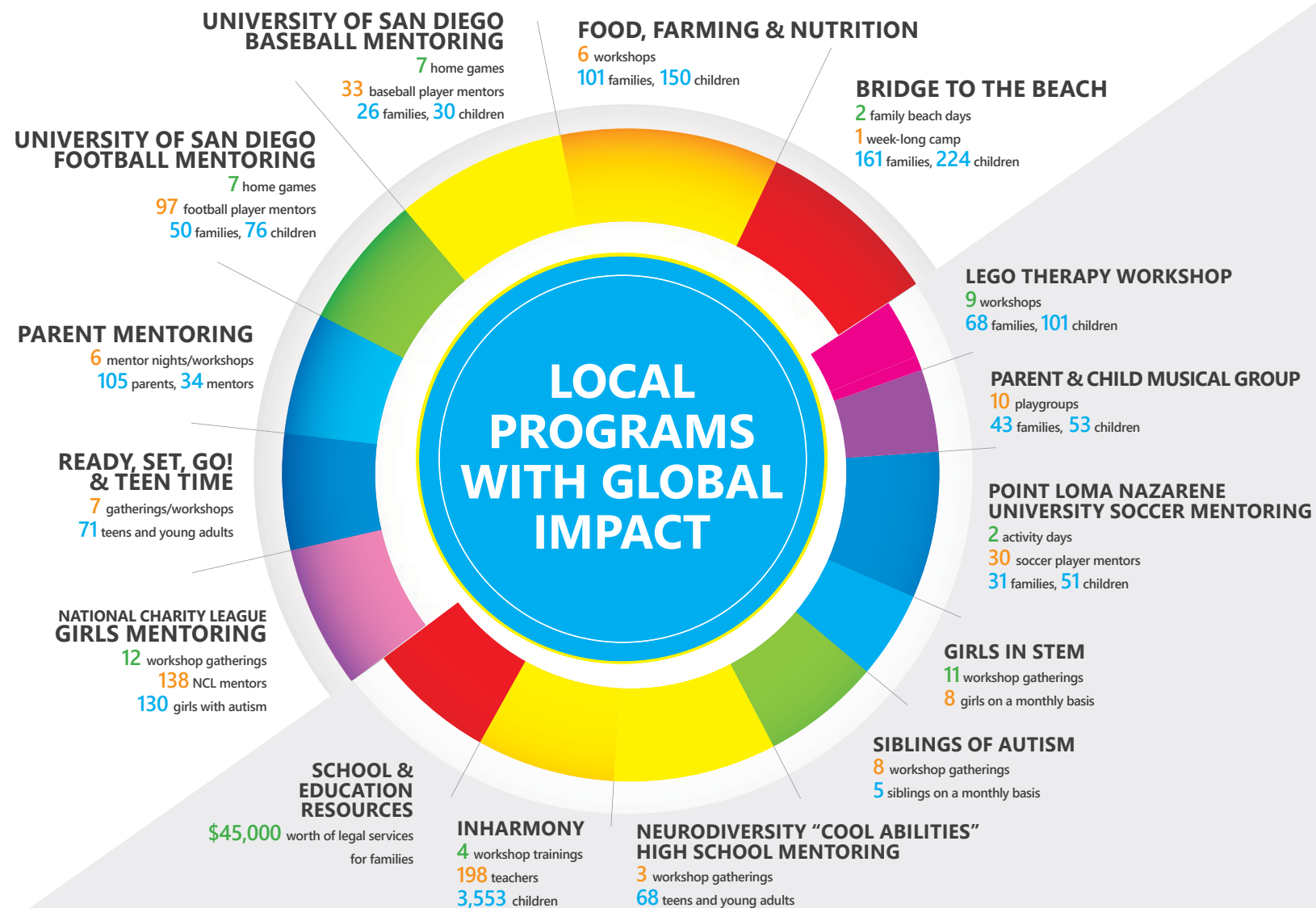
Autism Tree's Annual Neuroscience Conference features cutting-edge, global researchers in the fields of Pediatrics, Neuroscience, and Communication Disorders. The conference serves as a platform to bring together forward-thinking leaders and individuals who are interested in learning about scientific synergy in San Diego. This one day conference is attended by more than 450 innovators from the neuroscience community and features a mix of new research, discussions on neurodiversity, a Keynote Speaker, and a panel featuring autistic individuals.

The Autism Tree Project Foundation Annual Neuroscience Conference is chaired by Alysson Muotri, Ph.D. of the Sanford Consortium for Regenerative Medicine and moderated by Roger Bingham of the SALK Institute.

Find updated details about the conference at:
www.autismtreeproject.org/annual-neuroscience-conference

CARE: Community, Awareness, Research & Education Impact Through Programs

Autism Tree provides more than 20 FREE intensive programs and coordinates over 200 events annually designed to engage youth with autism in a variety of services that aim to improve their confidence, behaviors and social communications.

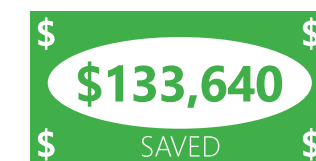


AUTISM TREE PROJECT FOUNDATION INTERN & YOUNG VOLUNTEER PROGRAM



Last year we had **291** volunteers & interns

Clocking a total of
5,140 service hours



A volunteer hour is worth \$26 in the state of California
saving **\$133,640** back to ATPF in 2018

WHO VOLUNTEERS AT AUTISM TREE?

- Students from:
 - Elementary School
 - Middle School
 - High School
- Colleges
- Businesses/ Corporations
- Senior Citizens/ Retirees
- Community Service Clubs & Organizations

Autism Tree could not accomplish its work without its community partners:
www.autismtreeproject.org/community-partners/category/our-community-partners